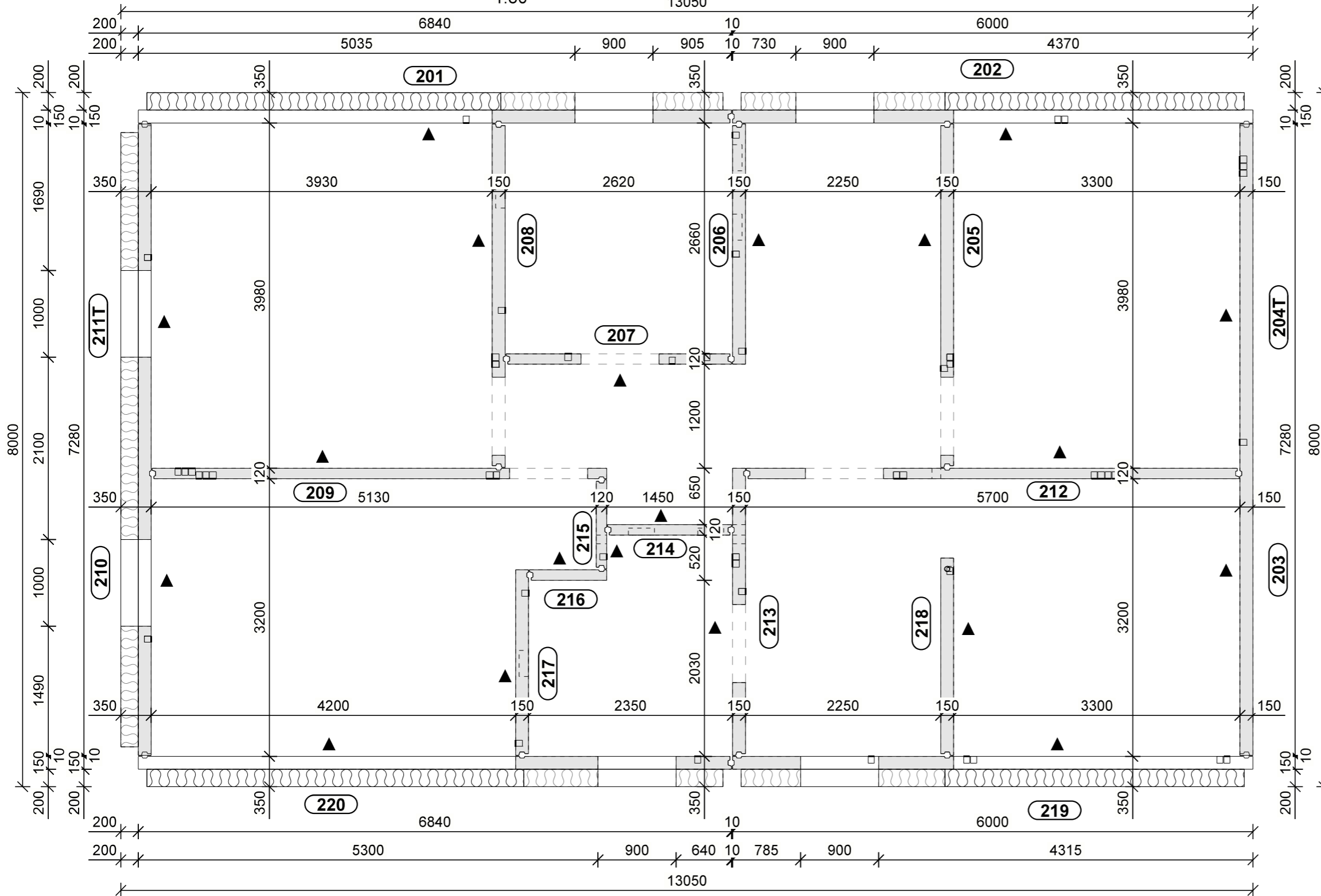


Rzut montażowy elementów piętra

Assembly plan elements of first floor

1:50 13050



Zestawienie elementów ściennych

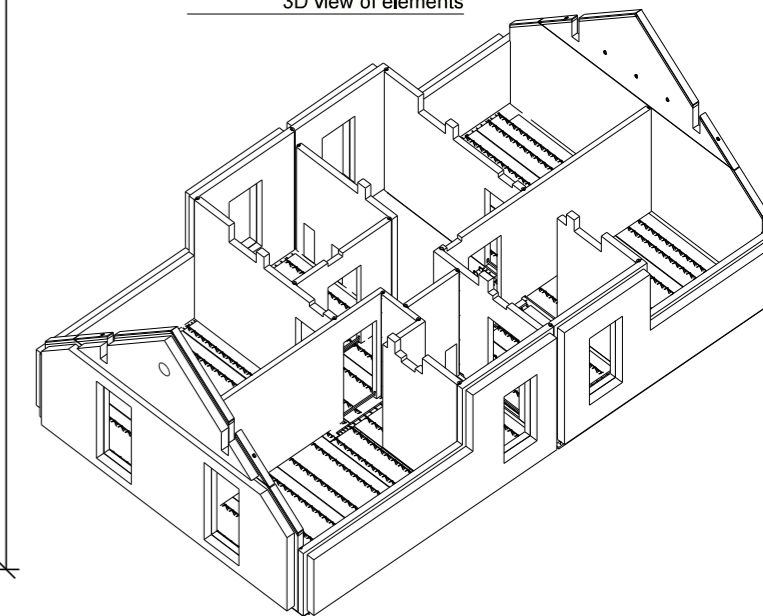
List of wall elements

Nr / No	dł. / L (mm)	Wys./H (mm)	Gr./T (mm)	Pow./A (m ²)	Wag./W (T)	Wys. dołu el. Bottom level
201	6840	3390	350	23.19	5.5	+3.060
202	6000	3390	350	20.34	4.8	+3.060
203	7280	2940	150	21.40	7.6	+3.060
204T	5577	2340	150	13.05	2.3	+6.010
205	3960	3390	150	13.42	3.7	+3.060
206	2770	3260	150	9.03	3.0	+3.060
207	2600	2940	120	7.64	1.6	+3.060
208	3960	3390	150	13.42	3.7	+3.060
209	5240	2940	120	15.41	3.9	+3.060
210	7280	2940	350	21.40	6.1	+3.060
211T	5577	2340	350	13.05	2.3	+6.010
212	5680	2940	120	16.70	4.2	+3.060
213	3310	3260	150	10.79	2.8	+3.060
214	1430	2940	120	4.20	1.2	+3.060
215	1030	2940	120	3.03	0.8	+3.060
216	890	2940	120	2.62	0.7	+3.060
217	2140	3390	150	7.25	2.4	+3.060
218	2275	3390	150	7.71	2.6	+3.060
219	6000	3390	350	20.34	4.8	+3.060
220	6840	3390	350	23.19	5.3	+3.060
Razem: Total:	20	elementy elements		Pow.= 267.20	m² Wag.= 69.5	T

M20LS -LISTA STALI

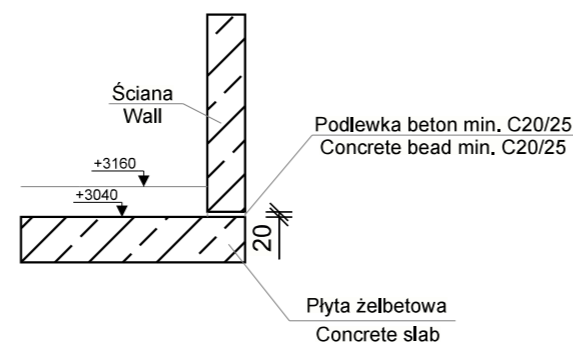
Widok 3d elementów

3D view of elements



Detal posadowienia ścian

1:30



SYMBOLE POWIERZCHNI

▲ POW. OD SPODU FORMY